



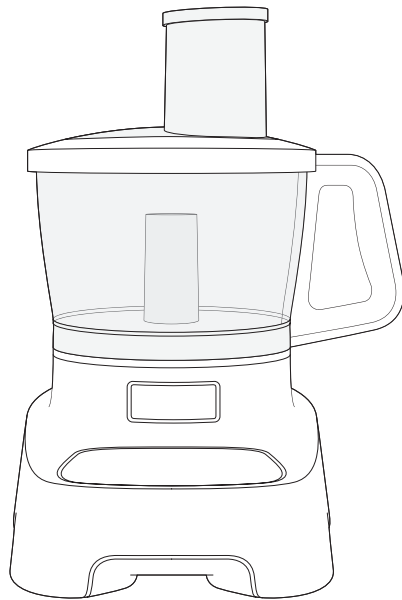
MARQUE: MOULINEX
REFERENCE: FP822110 DOUBLE FORCE
CODIC: 4346408



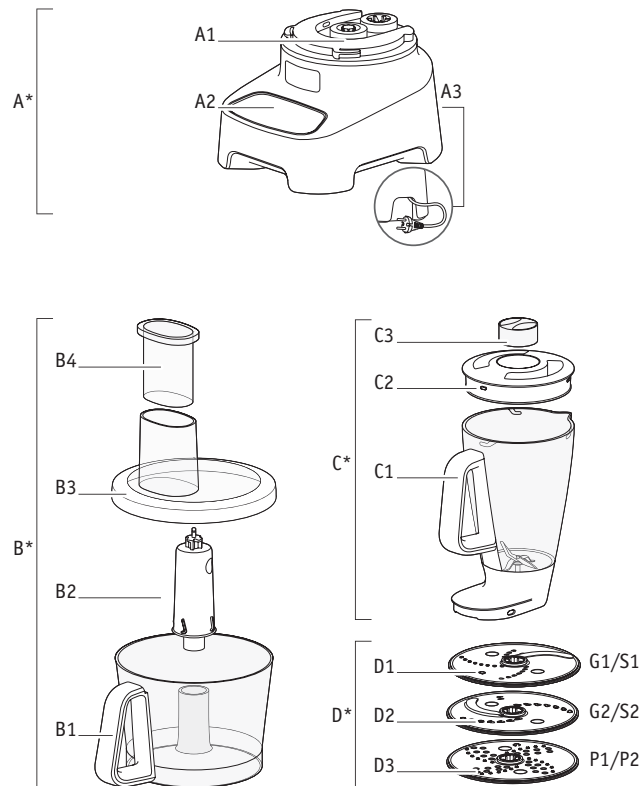
NOTICE

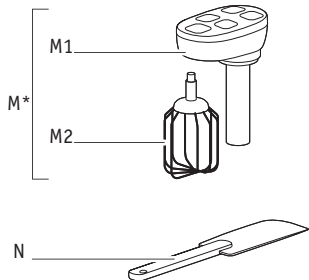
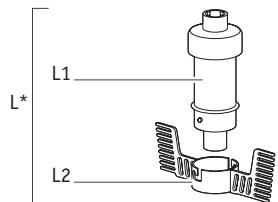
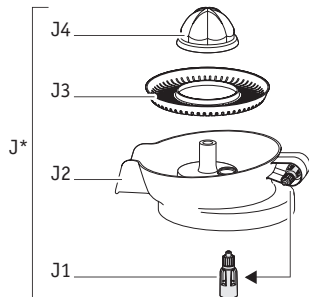
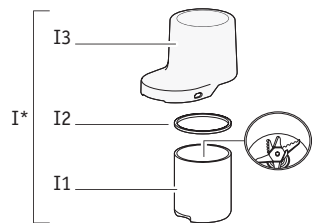
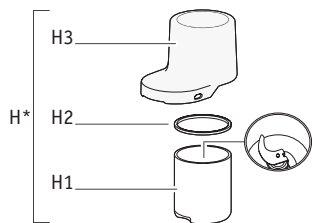
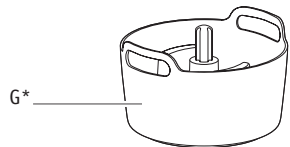
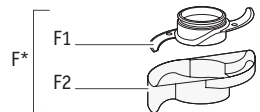


FR p. 13
 ES p. 13
 PT p. 13
 IT p. 14
 EL p. 14
 NL p. 14
 DE p. 15
 EN p. 15
 AR p. 16
 FA p. 16
 RU p. 17
 UK p. 17
 KK p. 17



FR
 ES
 PT
 IT
 EL
 NL
 DE
 EN
 AR
 FA
 RU
 UK
 KK



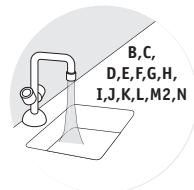
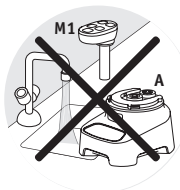
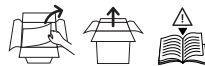


*
Selon modèle
En función del modelo
Consoante o modelo
A seconda del modello
Ανάλογα με το μοντέλο

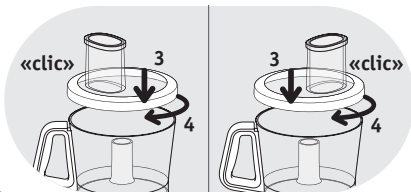
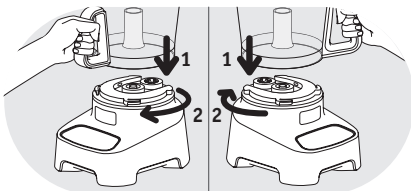
Afhankelijk van het model
Je nach Modell
Depending on model
حسب الموديل
بسته به مدل

В зависимости от модели
Залежно від моделі
Улітте байланышы

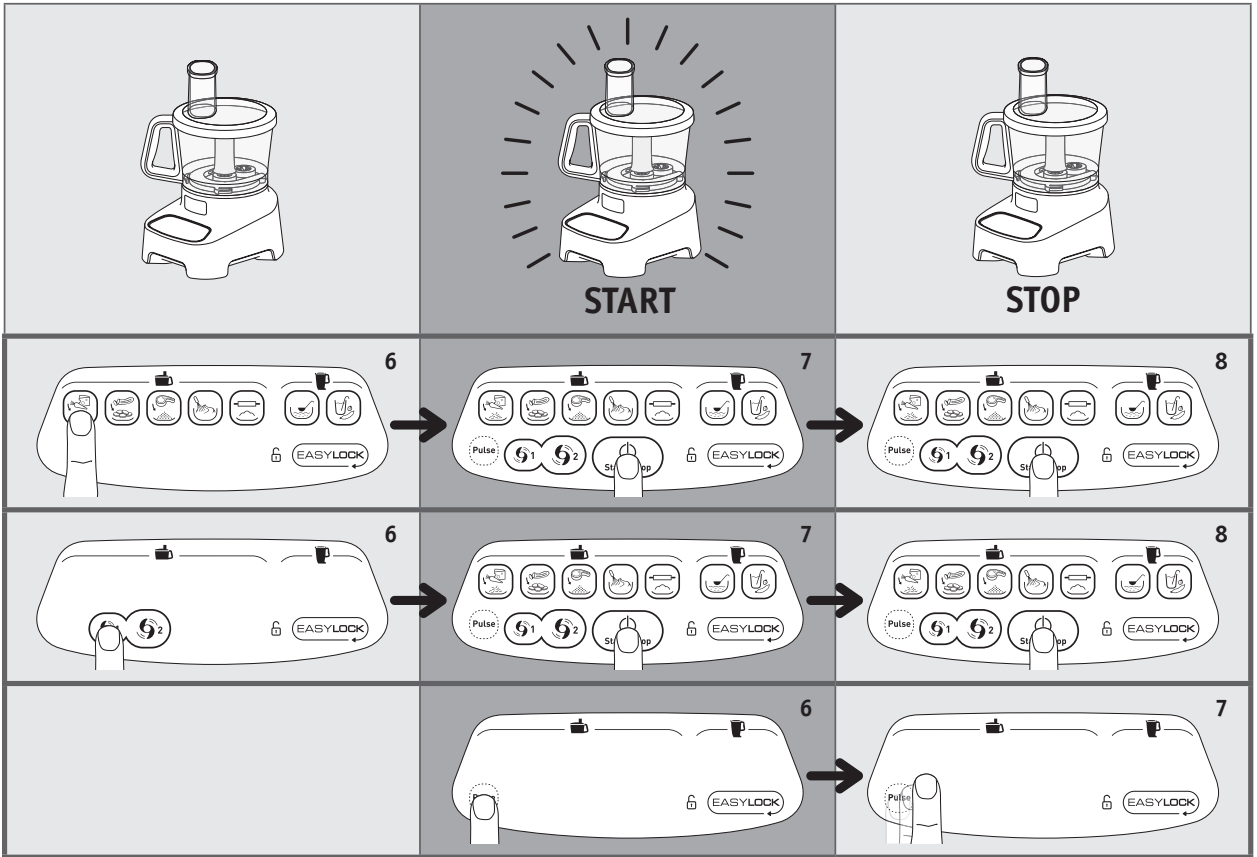
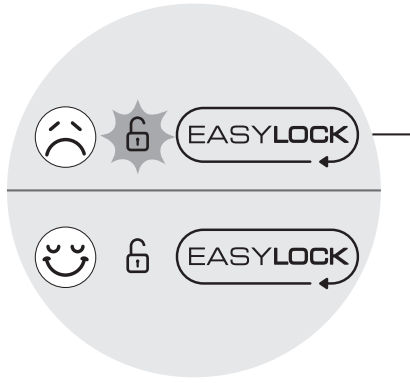
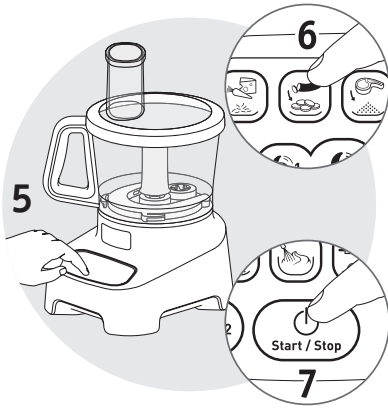
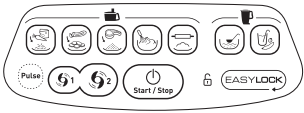
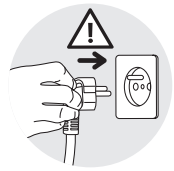
1

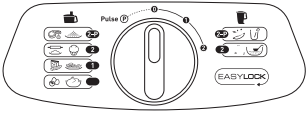


2



1

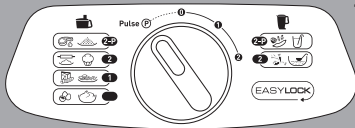




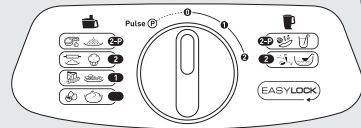
START



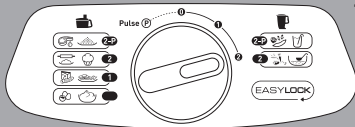
STOP



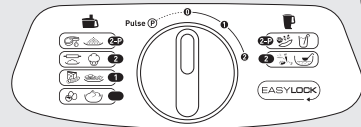
5



6



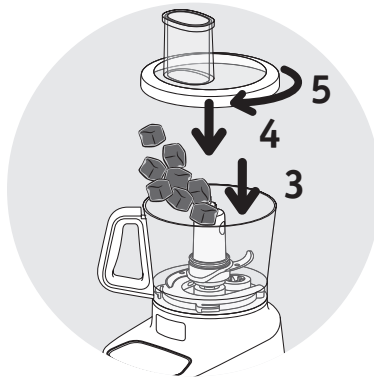
5



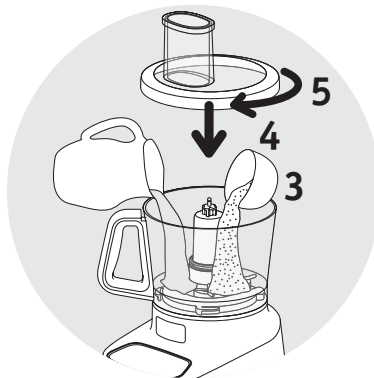
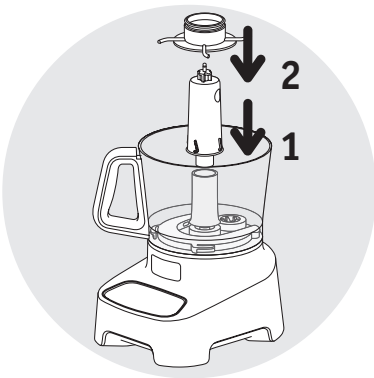
6

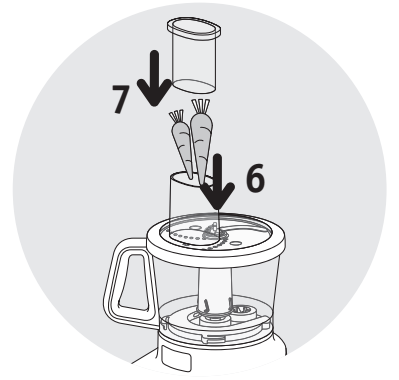
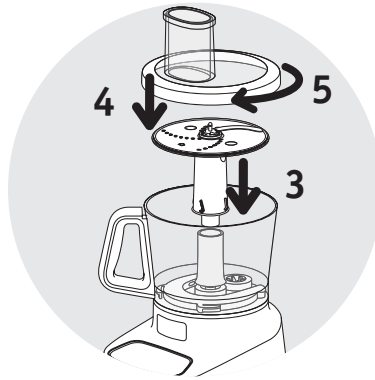
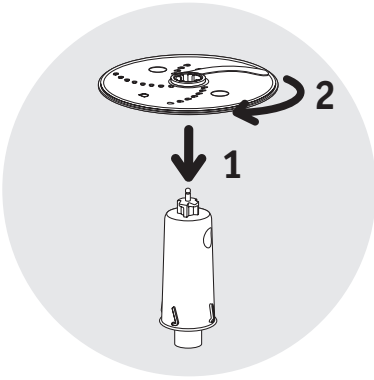


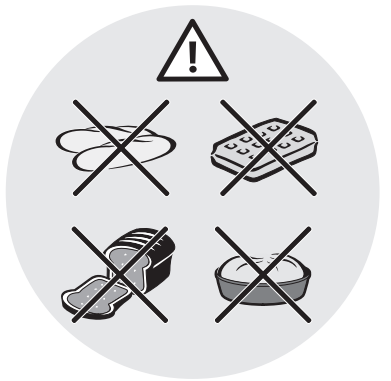
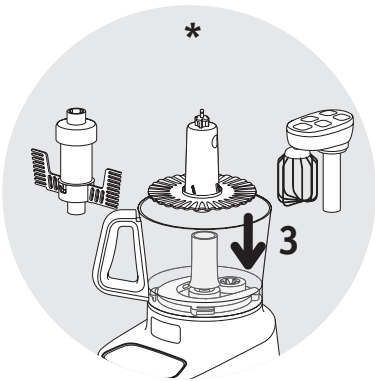
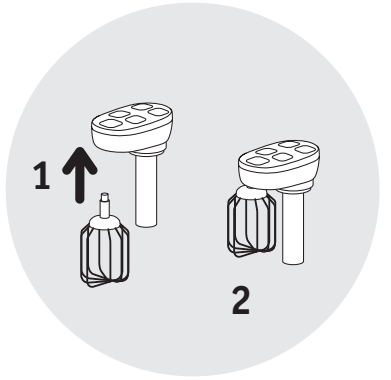
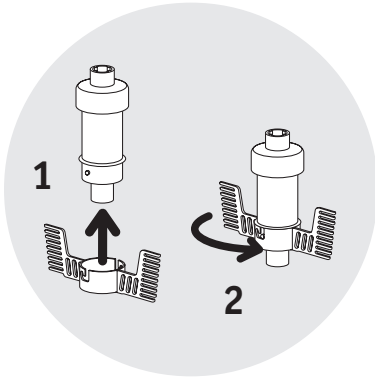
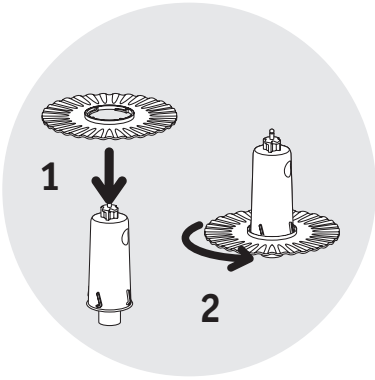
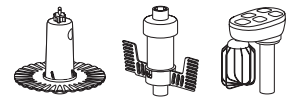
4



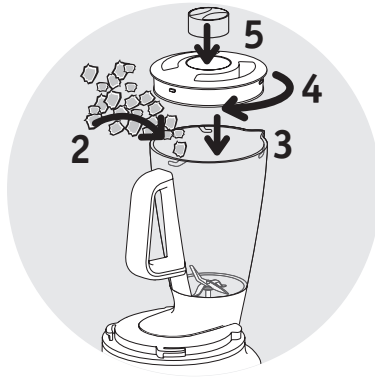
5



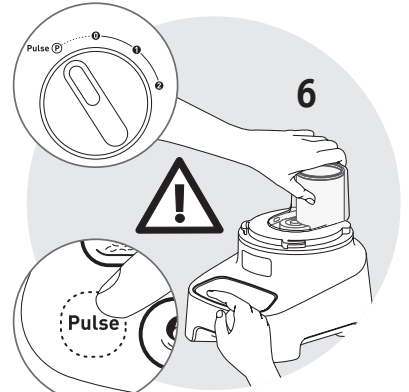
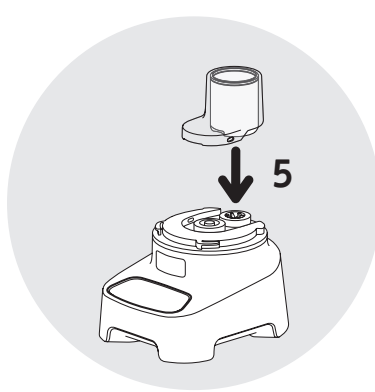
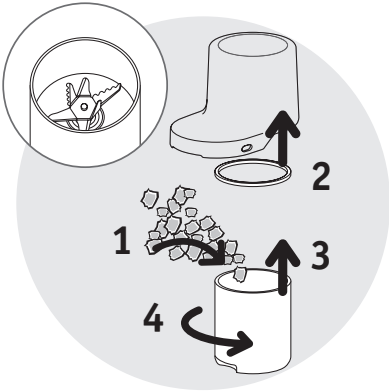
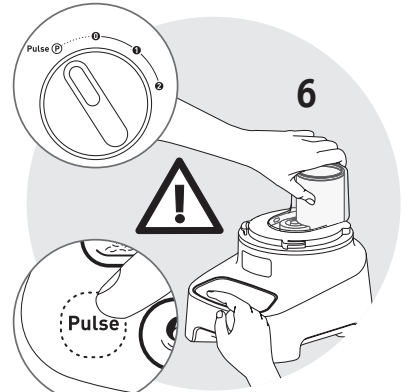
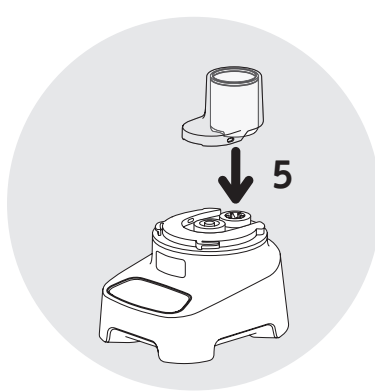
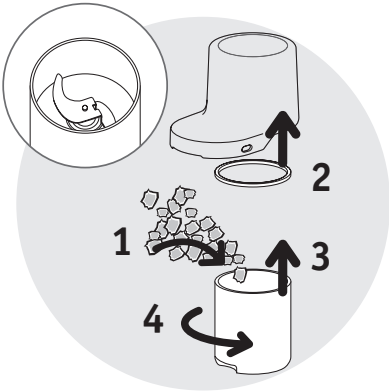




8

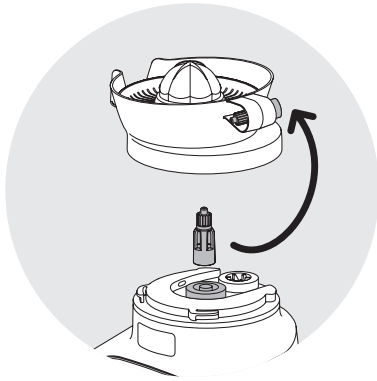
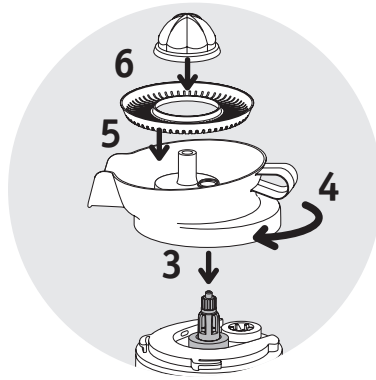
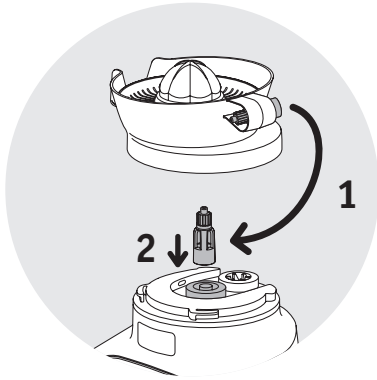


9

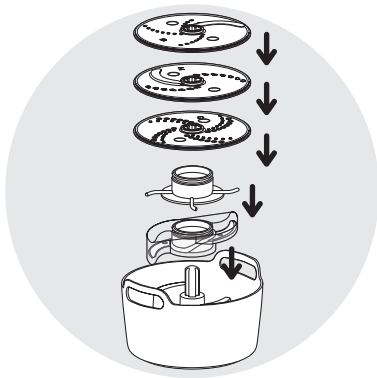


7

10





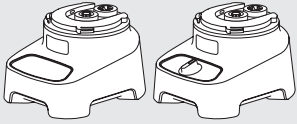
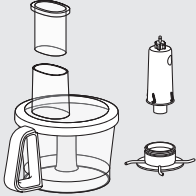






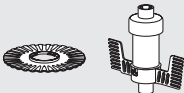
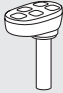




11



		max	max	max	max	max	max		
*F				30 s	600g		30 s	600g	
				30 s	600g		30 s	600g	
				10 x 1 s	600g		10 x 1 s	600g	
				2 min	1L		2 min	1L	
*E				1 min 30 s	1kg		1 min 30 s	1kg	
				1 min 30 s	800g		1 min 30 s	800g	
				2 min 30 s	1L		2 min 30 s	1L	
				3 min 30 s	1,2kg		3 min 30 s	1,2kg	
*D		*B 			2 min	500g		2 min	500g
*D					2 min	500g		2 min	500g
*D					2 min	500g		2 min	500g
					2 min	500g		2 min	500g
*K,L,M				10 min	0,25L		10 min	0,25L	
				10 min	0,25L		10 min	0,25L	
				10 min	X6		10 min	X6	

			max	max	max	max	max	max
*C 	*A 			3 min	1,25L		3 min	1,25L
				3 min	1,5L		3 min	1,5L
				3 min	1,5L		3 min	1,5L
*H 				8 x 1 s	120g		8 x 1 s	120g
				3 x 1 s	10-50g		3 x 1 s	10-50g
				8 x 1 s	80g		8 x 1 s	80g
				8 x 1 s	100g		8 x 1 s	100g
*I 		*1000W 		4 s	80g		4 s	80g
		*1200W 		4 s	120g		4 s	120g
*J 			2 min	500g		2 min	500g	

			
A 	✗	✗	✓
B,E 	✓	✓	✗
C 	✓	✓	✗
D 	✓	✓	✗
F 	✓	✓	✗
G 	✓	✓	✓
H,I 	✓	✓	✗
J 	✓	✓	✗
K,L 	✓	✓	✗
M1 	✗	✗	✓
M2 	✓	✓	✗
N 	✓	✓	✗



*Selon modèle

Les accessoires livrés avec le produit peuvent être différents, en fonction des modèles.

Les accessoires du modèle que vous venez d'acheter sont représentés sur son emballage.

Vous pouvez vous procurer les autres accessoires décrits dans cette notice auprès de votre revendeur habituel ou d'un centre de service agréé.

AVERTISSEMENT : Le livret des consignes de sécurité se trouve dans l'emballage. Veuillez les lire attentivement avant d'utiliser votre nouvel appareil. Gardez-les dans un endroit où vous pourrez les retrouver et vous y référer ultérieurement.

Votre appareil est équipé d'une sécurité anti-surchauffe (selon modèle).

Dans le cas d'une surchauffe, votre appareil cessera de fonctionner. Débranchez-le et laissez-le refroidir environ 20 minutes, puis rebranchez-le et reprenez votre utilisation.

Si votre appareil ne fonctionne pas, vérifiez :

- le branchement de votre appareil
- le verrouillage de chaque accessoire.

Votre appareil est équipé d'une sécurité en cas de surchauffe. Débranchez votre appareil et laissez-le refroidir.

Votre appareil ne fonctionne toujours pas ? Adressez-vous à un centre service agréé (voir liste dans livret Service).

*En función del modelo

Los accesorios suministrados con el producto podrán diferir en función de los diferentes modelos.

Los accesorios incluidos con el modelo adquirido están ilustrados en el embalaje.

Si lo desea, podrá adquirir los demás accesorios descritos en este manual de instrucciones a través de su distribuidor habitual, o bien de un servicio técnico autorizado.

¡ADVERTENCIA! El folleto indicativo de las pautas de seguridad a tener en cuenta se encuentra incluido en el embalaje. Asegúrese de leerlas detenidamente antes de utilizar su nuevo aparato. Consérvelas donde pueda tenerlas a mano y poder consultarlas en otra ocasión.

Su aparato incorpora un sistema de protección por sobrecalentamiento (en función del modelo).

En caso de sobrecalentamiento, su aparato dejará automáticamente de funcionar. Desenchúfelo de la red eléctrica y espere unos 20 minutos a que se haya enfriado lo suficiente y, enchúfelo de nuevo y siga utilizándolo.

Si su aparato no funciona, compruebe lo siguiente:

- El aparato está correctamente enchufado a la toma de corriente.
- Todos los accesorios están correctamente encajados en su sitio

Su aparato incorpora un sistema de protección que interrumpe su funcionamiento en caso de sobrecalentamiento. Desenchufe el aparato de la red eléctrica y espere a que se haya enfriado lo suficiente.

Si su aparato sigue sin funcionar, proceda como sigue: Póngase en contacto con un servicio técnico autorizado (Consulte la lista en el folleto de asistencia técnica suministrado).

* Consoante o modelo

Os acessórios entregues com o produto podem ser diferentes, consoante os modelos.

Os acessórios do modelo que acabou de adquirir estão representados na embalagem.

Pode obter outros acessórios descritos neste manual no seu revendedor habitual ou num Serviço de Assistência Técnica autorizado.

AVISO: O manual das instruções de segurança encontra-se no interior da embalagem. Leia atentamente o manual antes de utilizar o seu novo aparelho. Guarde-o para futuras consultas.

O seu aparelho vem equipado com uma proteção contra sobreaquecimento (consoante o modelo).

No caso de sobreaquecimento, o seu aparelho deixa de funcionar. Desligue-o da corrente e deixe-o arrefecer cerca de 20 minutos. Depois, volte a ligá-lo e continue a utilizá-lo.

Se o seu aparelho deixar de funcionar, verifique:

- A ligação do seu aparelho
- O bloqueio de cada acessório.

O seu aparelho vem equipado com uma proteção contra sobreaquecimento. Desligue o aparelho e deixe-o arrefecer.

O seu aparelho continua sem funcionar? Contacte um Serviço de Assistência Técnica autorizado (consulte a lista no folheto dos Serviços de Assistência).