



**MARQUE:** PHILIPS  
**REFERENCE:** HR2052/90  
**CODIC:** 4216822



**NOTICE**  
↓

Register your product and get support at  
[www.philips.com/welcome](http://www.philips.com/welcome)

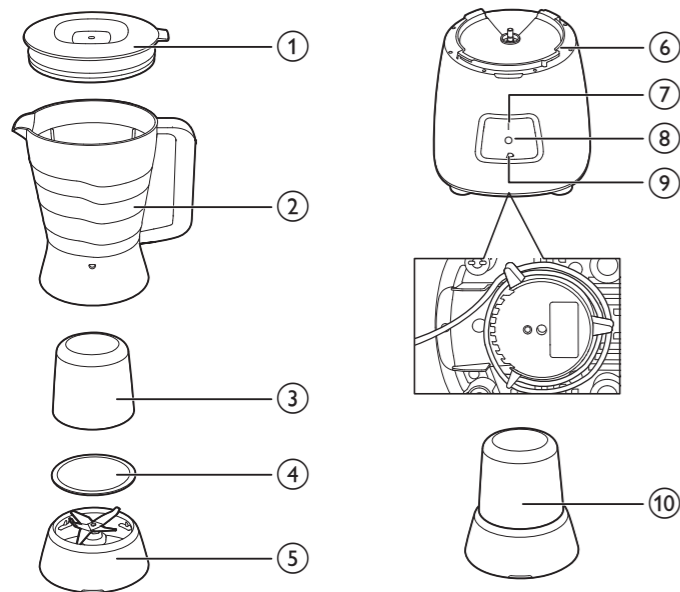


HR2051  
HR2052  
HR2056  
HR2057  
HR2058

EN	User manual
DA	Brugervejledning
DE	Benutzerhandbuch
EL	Εγχειρίδιο χρήσης
ES	Manual del usuario
FI	Käyttöopas
FR	Mode d'emploi

IT	Manuale utente
NL	Gebruiksaanwijzing
NO	Brukerhåndbok
PT	Manual do utilizador
SV	Användarhandbok
TR	Kullanım kılavuzu

**PHILIPS**



## English

- ① Lid
- ② Blender jar with blade unit
- ③ Mill jar (HR2056/HR2057/HR2058)
- ④ Sealing ring for mill blade unit (HR2056/HR2057/HR2058)
- ⑤ Blade unit for mill jar (HR2056/HR2057/HR2058)
- ⑥ Motor unit
- ⑦ On setting (I)
- ⑧ Off setting (O)
- ⑨ Pulse setting (P)
- ⑩ Extra mill for HR2058

## Dansk

- ① Låg
- ② Blenderglas med knivenhed
- ③ Møllekværnbeholder (HR2056/HR2057/HR2058)
- ④ Tætningsring til knivenhed til møllekværn (HR2056/HR2057/HR2058)
- ⑤ Knivenhed til møllekværnbeholder (HR2056/HR2057/HR2058)
- ⑥ Motorenhed
- ⑦ On-indstilling (I)
- ⑧ Off-indstilling (O)
- ⑨ Pulse-indstilling (P)
- ⑩ Ekstra møllekværn til HF2058

## Deutsch

- ① Deckel
- ② Mixbecher mit Messereinheit
- ③ Mühlenbecher (HR2056/HR2057/HR2058)
- ④ Dichtungsring für Mühlenmessereinheit (HR2056/HR2057/HR2058)
- ⑤ Messereinheit für Mühlenbecher (HR2056/HR2057/HR2058)
- ⑥ Motoreinheit
- ⑦ Einstellung «Ein» (I)
- ⑧ Einstellung «Aus» (O)
- ⑨ Taste für Impulsfunktion (P)
- ⑩ Zusätzliche Mühle für HR2058

## Ελληνικά

- ① Καπάκι
- ② Κανάτα μπλέντερ με μονάδα λεπίδων
- ③ Κανάτα μύλου (HR2056/HR2057/HR2058)
- ④ Δακτύλιος σφράγισης για τη μονάδα λεπίδων του μύλου (HR2056/HR2057/HR2058)
- ⑤ Μονάδα λεπίδων για την κανάτα του μύλου (HR2056/HR2057/HR2058)
- ⑥ Μοτέρ
- ⑦ Ρύθμιση ενεργοποίησης (I)
- ⑧ Ρύθμιση απενεργοποίησης (O)
- ⑨ Ρύθμιση στιγμιαίας λειτουργίας (P)
- ⑩ Πρόσθετος μύλος για το HR2058

## Español

- ① Tapa
- ② Jarra de la batidora con unidad de cuchillas
- ③ Jarra del molinillo (HR2056/HR2057/HR2058)
- ④ Junta para la unidad de cuchillas del molinillo (HR2056/HR2057/HR2058)
- ⑤ Unidad de cuchillas para la jarra del molinillo (HR2056/HR2057/HR2058)
- ⑥ Unidad motora
- ⑦ Posición de activado (I)
- ⑧ Posición de desactivado (O)
- ⑨ Posición Pulse (P)
- ⑩ Molinillo adicional para HR2058

## Suomi

- ① Kansi
- ② Tehosekoittimen kannu ja teräyksikkö
- ③ Mausteikkurin kannu (HR2056/HR2057/HR2058)
- ④ Maustemyllyn teräyksikön tiiviste (HR2056/HR2057/HR2058)
- ⑤ Maustemyllyn teräyksikkö (HR2056/HR2057/HR2058)
- ⑥ Runko
- ⑦ Käytössä-asetus (I)
- ⑧ Pois käytöstä -asetus (O)
- ⑨ Pulssiasetus (P)
- ⑩ HR2058-mallin mausteikkurilisäosa

## Français

- ① Couvercle
- ② Bol du blender avec ensemble de lames
- ③ Bol du moulin (HR2056/HR2057/HR2058)
- ④ Bague d'étanchéité pour l'ensemble de lames du moulin (HR2056/HR2057/HR2058)
- ⑤ Ensemble de lames du moulin (HR2056/HR2057/HR2058)
- ⑥ Bloc moteur
- ⑦ Activation (I)
- ⑧ Désactivation (O)
- ⑨ Fonction Pulse (P)
- ⑩ Moulin supplémentaire pour HR2058

## Italiano

- ① Coperchio
- ② Vaso del frullatore con gruppo lame
- ③ Vaso tritatutto (HR2056/HR2057/HR2058)
- ④ Anello di guarnizione per lama tritatutto (HR2056/HR2057/HR2058)
- ⑤ Gruppo lame per vaso tritatutto (HR2056/HR2057/HR2058)
- ⑥ Gruppo motore
- ⑦ Impostazione On (I)
- ⑧ Impostazione Off (O)
- ⑨ Impostazione a impulsi (P)
- ⑩ Tritatutto aggiuntivo per HR2058

## Nederlands

- ① Deksel
- ② Blenderkan met mesunit
- ③ Molenbeker (HR2056/HR2057/HR2058)
- ④ Afsluitring voor mesunit van maalmolen (HR2056/HR2057/HR2058)
- ⑤ Mesunit voor molenbeker (HR2056/HR2057/HR2058)
- ⑥ Motorunit
- ⑦ Aan-stand (I)
- ⑧ Uit-stand (O)
- ⑨ Pulsstand (P)
- ⑩ Extra maalmolen voor HR2058

## Norsk

- ① Lokk
- ② Mikserkanne med knivenhet
- ③ Kvernkanne (HR2056/HR2057/HR2058)
- ④ Tetningsring til kvernens knivenhet (HR2056/HR2057/HR2058)
- ⑤ Knivenhet for kvernkanne (HR2056/HR2057/HR2058)
- ⑥ Motorenhet
- ⑦ På-innstilling (I)
- ⑧ Av-innstilling (O)
- ⑨ Pulsinnstilling (P)
- ⑩ Ekstra kvern for HR2058

## Português

- ① Tampa
- ② Copo misturador com lâmina
- ③ Copo do moinho (HR2056/HR2057/HR2058)
- ④ Anel vedante para lâminas do moinho (HR2056/HR2057/HR2058)
- ⑤ Lâminas para copo do moinho (HR2056/HR2057/HR2058)
- ⑥ Motor
- ⑦ Ligar (I)
- ⑧ Desligar (O)
- ⑨ Pulse (P)
- ⑩ Moinho extra para HR2058

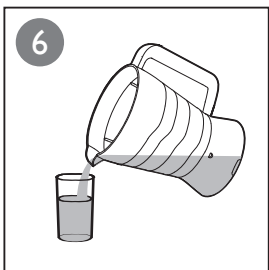
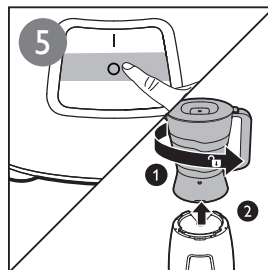
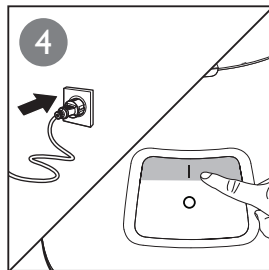
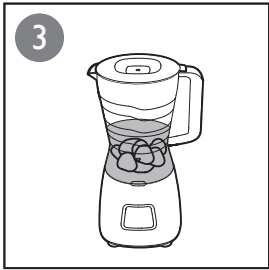
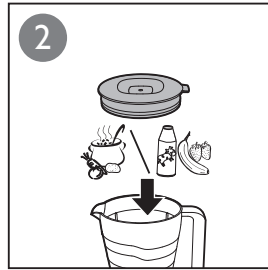
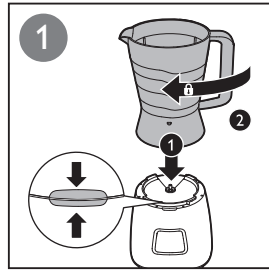
## Svenska

- ① Lock
- ② Mixerbehållare med knivenhet
- ③ Kvarnbägare (HR2056/HR2057/HR2058)
- ④ Tätningsring för knivenhet till kvarn (HR2056/HR2057/HR2058)
- ⑤ Knivenhet till kvarnbägare (HR2056/HR2057/HR2058)
- ⑥ Motorenhet
- ⑦ På-knapp (I)
- ⑧ Av-knapp (O)
- ⑨ Pulsknapp (P)
- ⑩ Extra kvarn för HR2058

## Türkçe

- ① Kapak
- ② Blender haznesi ve bıçak ünitesi
- ③ Öğütücü kavanozu (HR2056/HR2057/HR2058)
- ④ Öğütücü bıçak ünitesi için sızdırmazlık halkası (HR2056/HR2057/HR2058)
- ⑤ Öğütücü kavanozu için bıçak ünitesi (HR2056/HR2057/HR2058)
- ⑥ Motor ünitesi
- ⑦ Açma ayarı (I)
- ⑧ Kapama ayarı (O)
- ⑨ Titreşim ayarı (P)
- ⑩ HR2058 için ekstra öğütücü

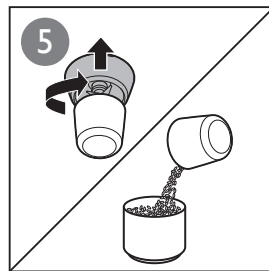
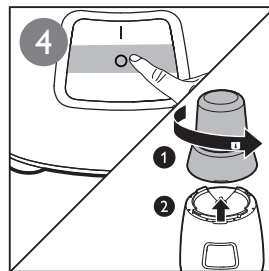
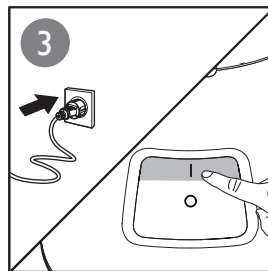
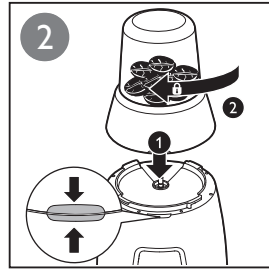
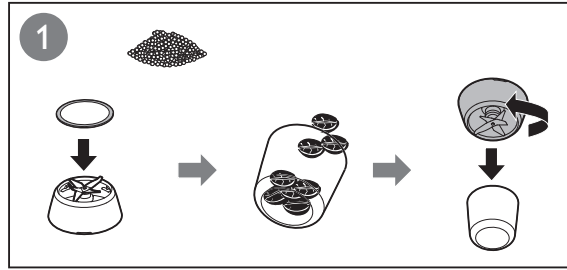
2



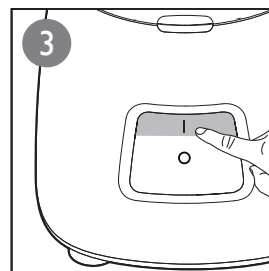
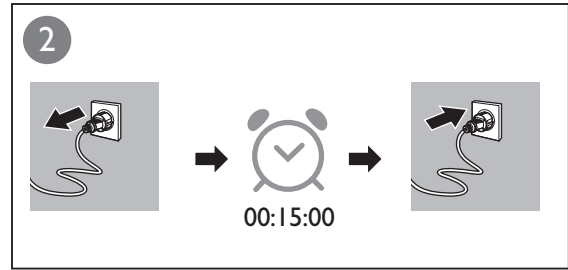
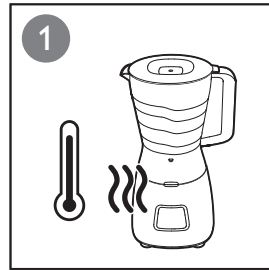
3
















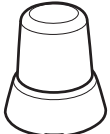
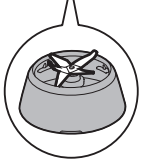






HR2056/HR2057/HR2058

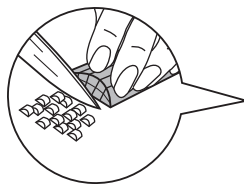


4



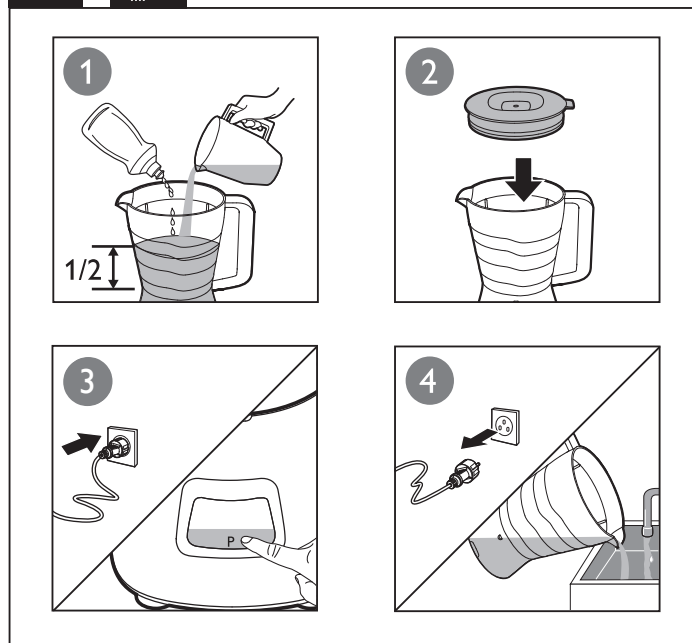
5




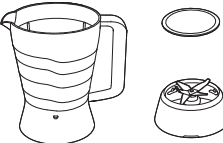
		 (MAX)	
		1000ml	1min
		1000ml	1min
		625ml	1min
		1000ml	1min
		1000ml	1min
		500ml	30sec
		6 x 	Px10
HR2056 HR2057 HR2058		50g	30sec
 		50g	30sec
		50g	30sec
		50g	1min
		50g	1min
		50g	1min
		50g	1min



2x2x2 cm

6



			
			
	✓	✓	✓
	✗	✗	✓

## Avant la première utilisation

Avant la première utilisation, nettoyez soigneusement toutes les pièces en contact avec des aliments (voir le chapitre « Nettoyage »).

## Utilisation du blender (Fig. 2)

Le blender est destiné à :

- mélanger des ingrédients liquides, tels que des produits laitiers, sauces, jus de fruits, soupes, cocktails et milk-shakes ;
- mixer des préparations à consistance molle, telles que de la pâte à crêpes ou de la mayonnaise ;
- réduire en purée des aliments cuits, pour préparer des repas pour bébés par exemple.
- Glace pilée

**Astuce :** pour mixer des ingrédients très brièvement, appuyez sur le bouton Pulse plusieurs fois. N'utilisez jamais la fonction Pulse pendant plus de quelques secondes.

## Utilisation du moulin (Fig. 3) (HR2056/HR2057/HR2058 uniquement)

Le moulin sert à moudre des ingrédients secs comme des grains de poivre, des graines de sésame, du riz, des grains de blé, de la noix de coco, des noix, des grains de café, des graines de soja séchées, des pois secs, du fromage, de la chapelure, etc.

## Protection anti-surcharge (Fig. 4)

En cas de surcharge, votre blender s'éteint automatiquement.

Pour réinitialiser l'appareil en cas d'arrêt automatique lié à une surcharge, suivez les étapes ci-dessous :

- 1 Arrêtez l'appareil, puis débranchez-le.
- 2 Retirez des ingrédients ou ajoutez du liquide afin de réduire la charge.
- 3 Laissez refroidir l'appareil pendant 15 minutes.
- 4 Branchez la fiche électrique.
- 5 Allumez l'appareil pour l'utiliser à nouveau.

## Nettoyage (Fig. 6)

Nettoyage facile : suivez les étapes : 1 2 3 4

**Remarque :** veillez à appuyer sur le bouton Pulse à plusieurs reprises.

## Recette

### Recette pour bébés

Ingrédients	Quantité	Vitesse	Temps
Pommes de terre cuites	100 g	ACT.	30 s
Poulet cuit	100 g		
Haricots verts cuits	100 g		
Lait	200 ml		

**Remarque :** laissez toujours refroidir l'appareil après chaque utilisation.



Specifications are subject to change without notice  
© 2015 Koninklijke Philips N.V.  
All rights reserved.



4240 002 01961